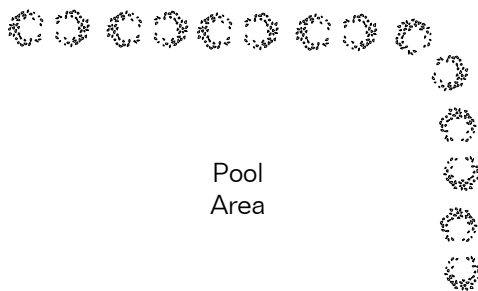


The square footages and room size information are deemed to be reliable but are not guaranteed and should be independently verified. This drawing is for marketing purposes only.

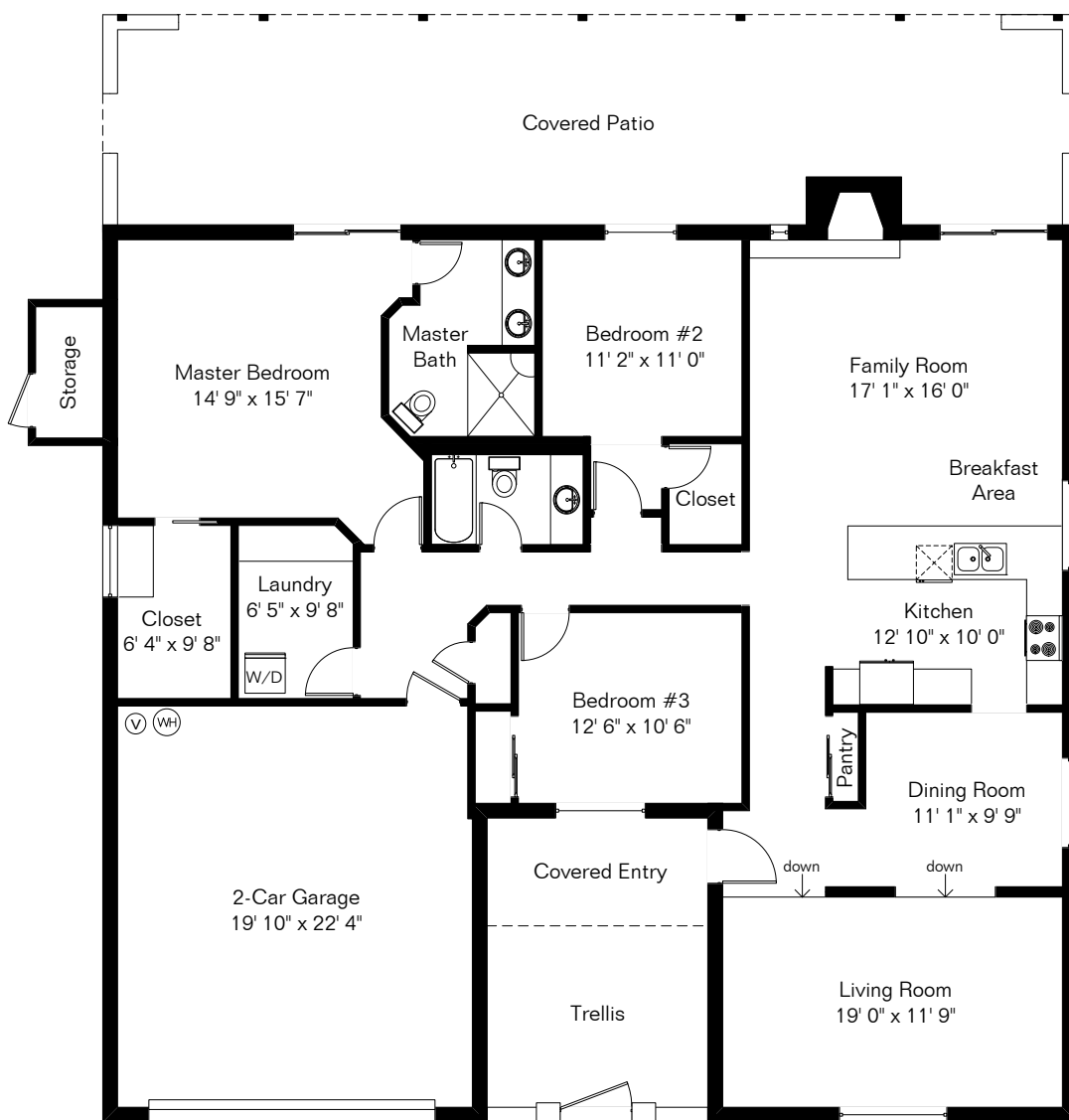
# 1509 S Burning Tree Ave



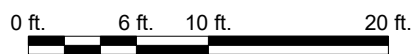
Half Court  
Basketball  
Area



Pool  
Area



Site Visit March 2021



Living Area 2,031 Sq Ft  
Garage 494 Sq Ft

Copyright 2021 Floor Plans First! LLC  
All Rights Reserved.

Floor Plans First!  
See the Floor Plan First!

FloorPlansFirst.com  
(520) 881-1500